

XAM



- In-line Voltage Amplifier
- Small dimensions
- Cable Gland or Connector Output

DESCRIPTION

Measurement Specialties, Inc. offers comprehensive measurement solutions including electronic signal conditioning and display units.

The XAM is a miniature in-line amplifier that adapts to most Wheatstone bridge based sensors (fitted with semiconductor or metal gauges).

Power supply is unipolar on the XAM-MV, which accepts 10 to 30 V unregulated voltage with outputs up to 10.5 V. The bipolar version XAM-BV requires ± 12 to ± 18 V regulated and stabilized supply with a maximum signal output of ± 10.5 V. The zero can be adjusted within 20% of the dynamic range by a potentiometer, externally accessible. The gain is usually factory set, but a gain set potentiometer allows individual fine adjustments.

When used with metal gauge fitted sensors (or semiconductor gauges in a half bridge configuration) a shunt calibration resistance can be built into the amplifier to be easily set by the end user. The standard version is supplied with a miniature connector on the sensor's side of the amplifier to facilitate installation. With its rugged and compact housing the XAM is designed for on-board applications.

FEATURES

- ± 10.5 V Amplified Voltage Output
- Unipolar or Bipolar Power Supply / Output
- Zero and Gain Adjust Potentiometer
- Connector and / or Sealed Cable Output

APPLICATIONS

- Suited for Wheatstone Bridge Sensors
- For on board sensor installation
- Laboratory and Research

PERFORMANCE SPECIFICATIONS

Ambient Temperature: 20±1°C (unless otherwise specified)

General Characteristics

Dimensions	15mm [.59 in]
Material	Aluminum Alloy
Connections	Miniature connector and cable gland
Operating Temperature	-10°C to 70°C [14 to 158°F]
Storage Temperature	-20°C to 80°C [-4 to 176°F]
Wiring	Shielded cable to power supply (version CP) or sensor (version PC) Standard length 2 m (6.5 ft)

Amplifier Performance

Gain G	10 to 1000 ±5 %
Gain Adjust Potentiometer	± 20 %
Frequency Response (-3dB)	20kHz@G=10, 4kHz @ G=100, 400Hz @ G=1000

Electrical characteristics-MV (unipolar)

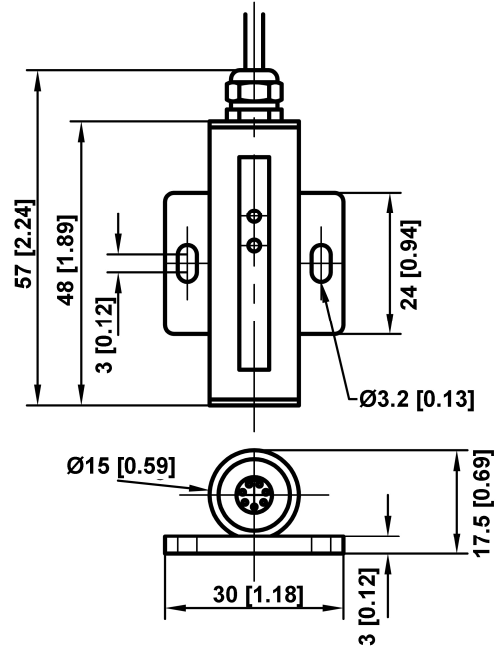
Power Required (Vin)	10 to 30 Vdc	15 to 30 Vdc
Output Signal (Vout)	0.5 V to 5.5 V max	0.5 V to 10.5 V max
Sensor Supply Voltage (Function of Vin)	5 V max. Vin=10Vmin	10 V max. Vin=15 V min
Exit Voltage Drift	100 ppm /°C	
Zero Offset Minimum	0.5V	
Zero Adjust	To 20% of Vout	
Gain Adjust	± 5 % of nominal gain	
Input Impedance	1GΩ	
Output Impedance	10Ω	
Output Current	5 mA max	
Current Consumption	Depending on connected sensor	
Common Mode Ratio Rejection	> 95dB min	
Input Protection	Reverse polarity protected	
Average Input Offset Drift	5μ V /°C	

Electrical Characteristics- BV (Bipolar)

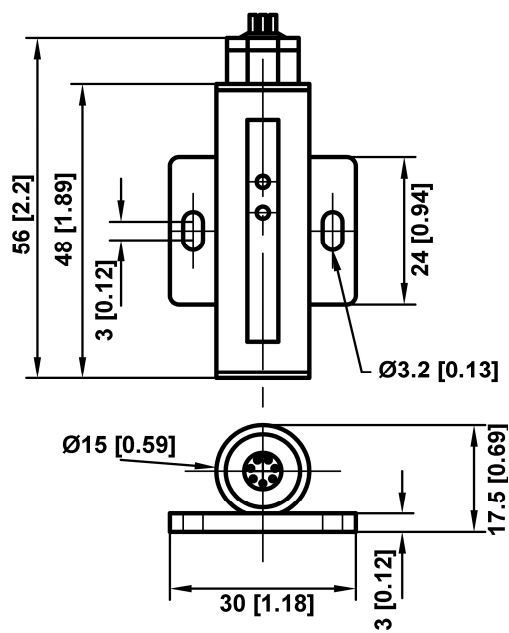
Power Required (Vin)	±12 to ±18 V	± 15 to ± 18 V
	Regulated and stabilized	regulated and stabilized
Output Signal (Vout)	±7.5 V max	±10.5 V max
Sensor Supply Voltage (function of Vin)	7 V max Vin=± 12 V min	10 V max. Vin=± 15 V min
Exit Voltage Drift	100 ppm /°C	
Zero Offset	0 V	
Zero Adjust	To 20% of Vout	
Gain Adjust	± 5 % of nominal gain	
Input Impedance	1G Ω	
Output Impedance	10 Ω	
Output Current	5 mA max	
Current Consumption	Depending on connected sensor	
Common Mode Ratio Rejection	>95 dB min	
Input Protection	Reverse Polarity Protected	
Average Input Offset Drift	5 μV/°C	

DIMENSIONS & WIRING SCHEMATIC (IN METRIC AND IMPERIAL)

XAM-CP



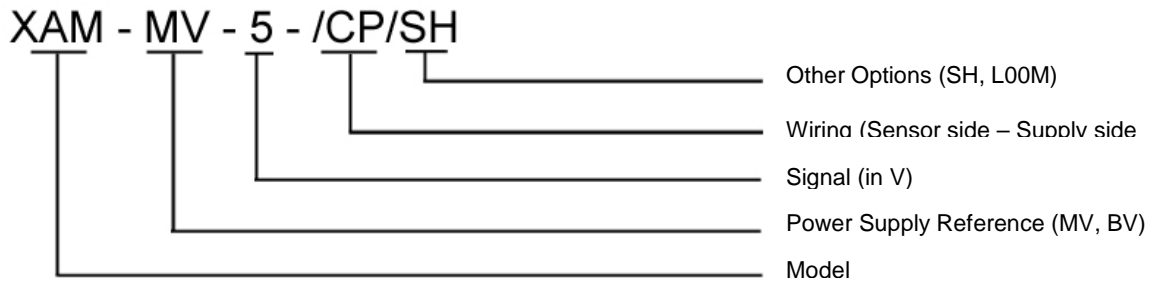
XAM-CC



OPTIONS

MV	: Unipolar Tension
BV	: Bipolar tension
1-10	: 1 to 10 V (MV Model)
± 1 to ± 10V	: BV Model
CP	: Connector (to sensor) /Cable gland (to power supply)
CC	: Connector / Connector
PP	: Cable gland / Cable gland
PC	: Cable gland (to sensor) / Connector (to power supply)
SH	: Shunt Calibration
L00M	: Special cable length, replace "00" with total length in meters

ORDERING INFO



NORTH AMERICA

Measurement Specialties, Inc.
Vibration Design Center
32 Journey - Suite 150
Aliso Viejo, CA 92656
United States USA
Tel: 1-949-716-0877
Fax: 1-949-916-5677
t&m@meas-spec.com

EUROPE

Measurement Specialties
(Europe), Ltd.
26 Rue des Dames
78340 Les Clayes-sous-Bois,
France
Tel: +33 (0) 130 79 33 00
Fax: +33 (0) 134 81 03 59
cs.lcsb@meas-spec.com

ASIA

Measurement Specialties
(China), Ltd.
No. 26 Langshan Road
Shenzhen High-Tech Park (North)
Nanshan District, Shenzhen
518057
China
Tel: +86 755 3330 5088
Fax: +86 755 3330 5099
pfg.cs.asia@meas-spec.com

The information in this sheet has been carefully reviewed and is believed to be accurate; however, no responsibility is assumed for inaccuracies. Furthermore, this information does not convey to the purchaser of such devices any license under the patent rights to the manufacturer. Measurement Specialties, Inc. reserves the right to make changes without further notice to any product herein. Measurement Specialties, Inc. makes no warranty, representation or guarantee regarding the suitability of its product for any particular purpose, nor does Measurement Specialties, Inc. assume any liability arising out of the application or use of any product or circuit and specifically disclaims any and all liability, including without limitation consequential or incidental damages. Typical parameters can and do vary in different applications. All operating parameters must be validated for each customer application by customer's technical experts. Measurement Specialties, Inc. does not convey any license under its patent rights nor the rights of others.